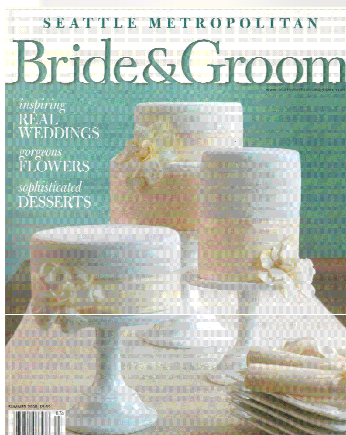




# Summer Breeze

by Luxe Wedding Design



Asian art, saltwater beaches, and love and respect for the earth inspired Luxe Wedding Design's Annette Lefebvre and her team to dream up a study of summer serenity in tropical pink, soft blue, and pale green. Miki Maxey of Miki's Flowers designed the botanical element, adding plumo succulents to origami boxes created out of recycled Japanese newsprint by paper artist Lynda Sherman of Bremelo Press. Sherman also letterpressed haiku inside small hand-bound books made of archival quality Italian cotton paper; the same tactile textile treatment transforms smooth white rocks into place markers.

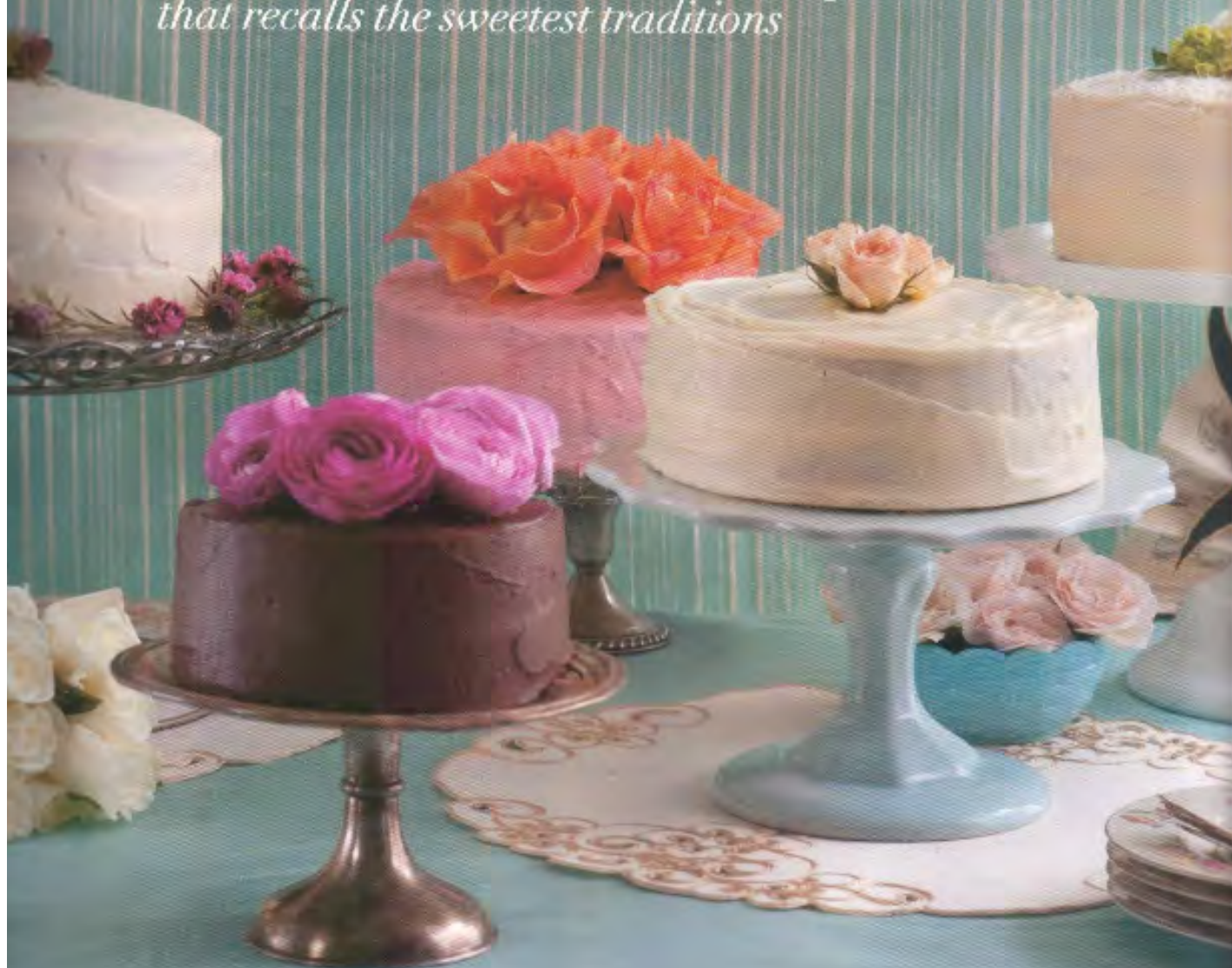
Luxe Wedding Design, 206-679-8044, [www.luxeweddingdesign.com](http://www.luxeweddingdesign.com); Miki's Flowers, 206-565-8820, [www.mikisflowers.com](http://www.mikisflowers.com); Bremelo Press, 206-713-4080

Recycled glass dinner plates Bedrock Industries (206-283-7625, [www.bedrockindustries.com](http://www.bedrockindustries.com)) Bonsai centerpiece Asia Pacific Gardening (253-872-8556, [www.asiapacificgarden.com](http://www.asiapacificgarden.com)) Linens and napkins Choice Linens (205-728-7731, [www.choicelinens.com](http://www.choicelinens.com)) Bamboo chairs AA Party Rentals (425-640-5547, [www.aaparty.com](http://www.aaparty.com)) Recycled paper chopsticks and sake and tea cups Uwajimaya ([www.uwajimaya.com](http://www.uwajimaya.com))



# PAST *Perfect*

*Add a retro-yet-refined element  
to your reception with a dessert spread  
that recalls the sweetest traditions*



PHOTOGRAPHS BY *Danielle Leavell* EVENT DESIGN BY *Luxe Wedding Design* WITH *Bremelo Press*



*Turning to the history books* to investigate what our mothers' and grandmothers' wedding cakes were like, Ruth-Anne Ford of **Ruth-Anne Ford Cakes** (206-293-1798; ruthanneford.com) found that simple, elegant dots, gum-paste flowers, and gold-foil toppers were once common adornments. Here, a horseshoe bodes well for the lucky couple. Ford's toasted-almond cake is striped with semi-sweet chocolate ganache and dark cherry mousse, and the pistachio-colored Swiss vanilla buttercream adds a final layer of nostalgia. The Chartreuse-cognac "snow cone," however, is all caramelly, herbaceous modernity. Frequent Luxe **Wedding Design** collaborator and letterpress artist Lynda Sherman of **Bremelo Press** (206-713-8080; bremelopress.com) weaves the eras together with French-feeling paper fans—for you, of course.



1. Express yourself with charming vintage letterpresses. \$10 each at Watson Kennedy, 1022 First Ave., (206) 652-8300, watsokennedy.com

2. A bold canvas screen print celebrates the power of three. \$195 at City Home Store, 517 Burke St., (206) 324-4166, city-home-store.com

3. Here to stylish settings with a mix of letters and numbers on porcelain plates. \$13 each at Tableau.

4. Designed by architect, designer and writer Joaquin Ruiz Miles, the Manuscript Hug features a romantic poem in Miller's native Catalan. \$3300 through Design Within Reach, 1916 First Ave., (206) 443-0000, dwr.com

5. Embraced with topcoat art tude, this couture shade with custom letterpress printing by Linda Sherman is worth standing around. \$300 through Lit Shades, 314 Occidental Ave. S., (206) 816-4101, litshades.com

Speakers  
that are invisible.

Televisions  
that disappear.

Home Automation  
that is, well...

easy

Entertaining is made simple when you have sound throughout your home—literally walls, televisions that reveal themselves from behind museum-quality art, and lighting scenes at the touch of a button.

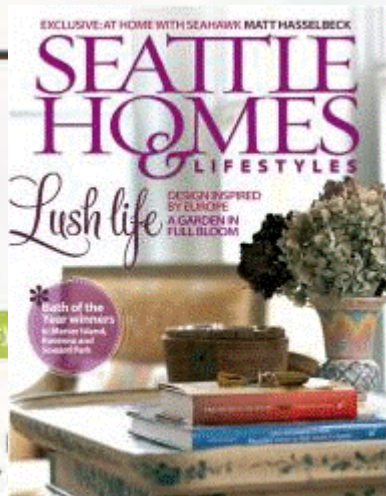
Impressing your guests has never been this easy.

Visit our showroom, website, or call us for a complimentary consultation.

www.hiddentech.com  
main (425) 889-9800



ARCHITECHTRONICS



## The Right Size Home Furnishings



DEL-TEET

WE'VE EXPANDED!

FURNITURE • INTERIORS

Phone (425) 462-5400 • Open Every Day of the Week  
10308 NE 10th St., Bellevue (2 blocks north of Bellevue Square)  
www.delteet.com

# Orchard Evenings

*Deep, ripe, fruity reds and pale lavender and lilac create a pretty, playful, and bold palette*

## CHERRY PICK

You won't need more than your favorite lip color, but Judith Lieber's crimson clutch makes a striking accessory nonetheless. \$1,495 at Nelman Marcus, 71717 NE Eighth St., Bellevue, 425-452-3300; nelmanmarcus.com



## SCARLET LETTERS

Make a gorgeous first impression with the jeweled embellishments, dupioni silk details, and elaborate script of Brittany O'Brien's invitation sets. Prices vary according to services. Dolce Design, 360-961-5983; dolcedesign.net



## SWEET EARTH

Local, organic lavender flavors the herbed sugar blend in Annette Lefebvre's guest favors. Bremelo Press created the letterpress labels. Prices vary according to services. Luxe Wedding Design, 206-679-8044; luxeweddingdesign.com



## GODDESS DRESSING

The stylish yet timeless asymmetrical shoulder detail of this Beisole gown gives bridesmaids a current twist. About \$200 at Moms, Maids, and More, 827 Bellevue Way NE, Bellevue, 425-455-2702; momsmaidsandmore.com



SOFTW  
Hitchcoo  
glass, fro  
silk neckl  
ized with  
elements  
Hitchcoo  
Maarong  
shophtic

## JAZZ IT UP

Add Swing-era shine and sizzle with this reproduction 1920s sterling silver and amethyst cocktail ring. \$800 at Hitchcock, 1406 34th Ave., Madrona, 206-836-7173; shophitchcock.com

